

Thursday, January 30, 2025

January Region 2 RESPTC Newsletter

REGION 2 RESPTC PARTNER COMMUNITY NEWSLETTER

Happy New Year from the Region 2 Regional Emerging Special Pathogen Treatment Center (RESPTC) team!

The Region 2 RESPTC at NYC Health + Hospitals/Bellevue serves as a National Special Pathogen System (NSPS) Level 1 facility and leads special pathogen preparedness efforts for New York, New Jersey, Puerto Rico, and the U.S. Virgin Islands. Learn more about RESPTC updates, resources, and partner events [here](#).

SPECIAL PATHOGEN NEWS

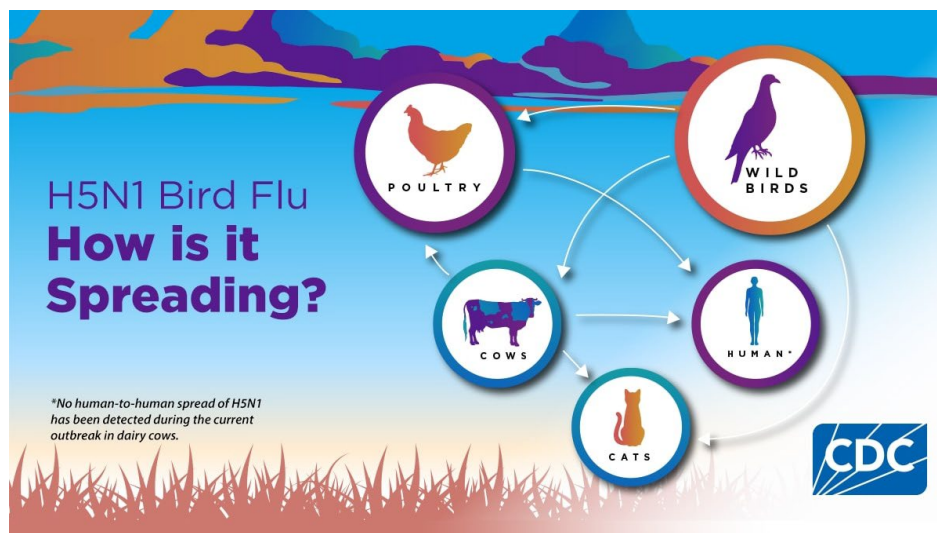


Image Source: CDC

H5N1 Avian Influenza

[67 cases](#) of H5N1 Avian Influenza have been reported in the U.S. since early 2024, including a [death of a Louisiana resident](#) from H5N1 avian influenza earlier this month. [Recently detected mutations](#) are raising concern about the virus adapting to more effectively infect humans. The current public health risk remains low and the situation is being closely monitored. Review the recent CDC HAN [here](#).

Clade I Mpox in Georgia

The [second U.S. case of clade I mpox](#) was confirmed on January 14th in Georgia. The patient recently traveled from a country experiencing sustained mpox transmission and no additional cases have been reported.

Marburg Virus Disease in Tanzania

[Tanzania confirmed an outbreak](#) of Marburg virus disease – a viral hemorrhagic fever that is clinically similar to Ebola virus disease. The World Health Organization (WHO) deployed rapid response teams to support outbreak investigation and response.

RESOURCE HIGHLIGHTS & UPCOMING EVENTS

H5N1 Avian Influenza Webinar

The [Region 2 Regional Emerging Special Pathogen Treatment Center \(RESPTC\)](#) at NYC Health + Hospitals | Bellevue is pleased to invite you to our upcoming HHS Region 2 Special Pathogen Preparedness Partner Community Webinar on H5N1 Avian Influenza. This session will provide an in-depth look at the current status of Avian Influenza, including the following topics:

- Overview: Epidemiology and Transmission
- Clinical Presentation and Screening Strategies
- Public Health Reporting and Surveillance
- Diagnostic Considerations
- Clinical Management
- National Emerging Special Pathogens Training and Education Center ([NETEC](#)) and RESPTC Resources
- Q&A with Experts in the Field

Webinar Information

Date: February 14th

Time: 11:00-12:30pm Eastern Time

Duration: 90 minutes

Register [here](#).

Don't miss this opportunity to hear from leading experts and engage with the latest H5N1 findings. We look forward to seeing you on the 14th!

January Travel Screening Country List

The New York City Health + Hospitals Travel Screening List reviews current special pathogen disease outbreaks that require prompt identification, isolation and/or specialized evaluation and management. This list, which may be found [here](#), can serve as a resource while screening patients.

Please see below for resources and symptom lists for current outbreaks.


Current Infectious Disease Outbreaks for New York City Providers

The New York City Department of Health and Mental Hygiene (NYC DOHMH) offers a list of current infectious disease outbreaks as a resource for healthcare providers in New York City. Find the resource [here](#).


REGION 2 NEWS

NSPS World Cup Tabletop Exercise


Host City Impact




Host Cities


 **U.S. World Cup Sites**

- Atlanta, GA
- Boston, MA
- Dallas, TX
- Houston, TX
- Kansas City, MO
- Los Angeles, CA
- Miami, FL
- New York City, NY
- Philadelphia, PA
- San Francisco, CA
- Seattle, WA

 **Canada / Mexico World Cup Sites**

- Toronto, Canada
- Vancouver, Canada
- Mexico City, Mexico
- Guadalajara, Mexico
- Monterrey, Mexico



 *Indicates World Cup site*

Impact

8 of 10

HHS Regions include a city that will be hosting a World Cup match.

20,000

Number of volunteers in the 2022 Qatar World Cup, from 150 countries.

The NSPS hosted a national exercise with over 500 partners to prepare the United States for special pathogen threats arising from the 2026 World Cup. The Region 2 RESPTC at NYC Health + Hospitals | Bellevue facilitated a tabletop with over 40 attendees from throughout HHS Region 2 – including representatives from public health, health care, laboratory, and EMS. The Region 2 tabletop focused on a potential transfer of a MERs patient from New Jersey to the Region 2 RESPTC. Thank you to our partners who attended!

Learn more [here](#).

OUTBREAK ADVISORIES AND RESOURCES

H5N1

Providers should consider the possibility of H5N1 in patients who had contact with potentially infected sick or dead animals in the past week and show the following symptoms:

- fever,
- cough,
- sore throat,
- body aches,
- headaches,
- fatigue,
- eye redness (or conjunctivitis), and/or
- shortness of breath

Source: [CDC](#)

Providers should report any non-sub typeable influenza A cases to their Department of Health.

Resources

- CDC HAN | [Accelerated Subtyping of Influenza A in Hospitalized Patients](#)
- [NETEC Influenza A Resource Repository](#)
- [NETEC Webinar Series \(8/14/2024\): H5N1 Town Hall: Updates for Frontline Staff](#)
- [NETEC Laboratory Resources: Highly Pathogenic Avian Influenza \(HPAI\)](#)
- [CDC Bird Flu News and Spotlights](#)

New York State Reporting

To report sick or dead poultry in New York State, call the NYS Department of Agriculture and Markets at 518-457-3502.

Marburg Virus Disease (MVD)

Marburg is a highly infectious viral hemorrhagic fever that is clinically similar to Ebola. Marburg is spread through contact with blood or bodily fluids of an infected individual. Learn more about transmission [here](#).

Early signs and symptoms include:

- fever,
- chills,
- malaise,
- headache,

- muscle aches,
- sore throat,
- chest pain,
- abdominal pain,
- vomiting,
- diarrhea, and
- maculopapular, erythematous rash.

Symptoms may progress to include:

- jaundice,
- inflammation of the pancreas,
- severe weight loss,
- delirium,
- shock,
- liver failure,
- massive hemorrhaging, and
- multiorgan failure.

Resources

- [CDC| Marburg Virus Disease Situation Summary](#)
- [NETEC Viral Hemorrhagic Fevers \(VHFs\) Matrix](#)
- [Health Care Facility Viral Hemorrhagic Fever \(VHF\) Preparedness Checklist](#)
- [EMS Guidelines for Marburg Virus Disease](#)
- [Infection Prevention and Control Measures for Marburg Virus Disease](#)

Mpox

The second U.S. case of clade I mpox was identified in Georgia in January and cases of mpox clade II continue to occur in our region. Historically, Clade I mpox causes more severe illness than Clade II. Providers should test for mpox in any patient with compatible rash and symptoms and screen for recent travel to or close contact with someone who recently returned from the affected region. Please contact your local health department to arrange for Clade I testing if indicated.

Symptoms include:

- rash,
- fever,
- chills,
- swollen lymph nodes,
- exhaustion,
- muscle aches,
- headache, and/or
- respiratory symptoms

Source: [CDC Health Alert](#)

Resources

- [New York City Department of Health and Mental Hygiene \(NYCDOHMH\) mpox data and resources](#)
- [NETEC Webinar Series \(6/228/2024\)/Online Course: Mpox in 2024: Updates and Considerations for Frontline Staff](#)
- [Mpox in 2024: 10 Takeaways for Frontline Health Care Staff](#)

JANUARY COMMUNITY SPOTLIGHT | NEW JERSEY HOSPITAL ASSOCIATION



The New Jersey Hospital Association (NJHA) is dedicated to strengthening the New Jersey healthcare system's emergency preparedness, response, recovery and resilience. As the sub-recipient of the New Jersey Department of Health (NJDOH) for the federal Hospital Preparedness Program (HPP) funded through the Administration for Strategic Preparedness and Response (ASPR), NJHA plays a pivotal role in coordinating the state healthcare system's response to public health emergencies, including special pathogen preparedness.

NJHA supports special pathogen preparedness by facilitating training, creating toolkits and coordinating regional health care coalitions (HCCs) across the state. These coalitions are essential for managing health crises like COVID-19, RSV, Influenza, mpox and any other medical surge that the state may face. NJHA's leadership and communication efforts help healthcare facilities respond swiftly to these threats, including deploying resources, tracking patient and staffing data and ensuring the continued flow of essential supplies.

Special pathogen preparedness is critical for hospital associations and health care coalitions to ensure effective, coordinated responses to emerging threats. NJHA has consistently demonstrated its expertise in responding to large-scale public health emergencies by leveraging partnerships, utilizing data platforms and coordinating with the State to assist hospitals in navigating complex situations. Two of the most recent examples are the COVID-19 pandemic and the surge in pediatric respiratory disease during 2023-24.

NJHA's current work includes enhancing health system preparedness and resilience through partnerships, education events and innovative programs related to workplace violence, supply chain integrity, NHSN respiratory data reporting dashboards and plan and assessment development. NJHA continues to focus on advancing the state's preparedness efforts, as exemplified by our ongoing initiatives to support healthcare providers and ensure a sustainable, effective emergency response while leveraging resource tools such as NJHA's EMResource Tool and several others.

NJHA is led by a team of dedicated professionals, including Regional Coalition Managers and Emergency Management Coordinators, who have been instrumental in driving key initiatives directed by coalition leaders, clinical advisors and coalition members from across the state of New Jersey. Questions and comments are welcome through email at rhcc@njha.com, by phone at 800-457-2262, or by visiting www.njhcc.org.

We want to highlight your work to prepare for and respond to special pathogen threats. If you have a special pathogen preparedness or response story, person, or team to spotlight, please send it to BellevueSPP@nychhc.org.

WHAT'S NEW ON THE REGION 2 RESPTC WEBSITE?

The Region 2 RESPTC website is a one-stop shop for all things related to special pathogen preparedness and response in New York, New Jersey, Puerto Rico, and the U.S. Virgin Islands. The team has updated the [Tools and Resource page](#) with new resources including the latest Travel Screening List and resources dedicated to the H5N1 response. You can also read or re-read past newsletter issues [here](#).

[SUBSCRIBE TO OUR NEWSLETTER](#)